

NEMA Frame Designation



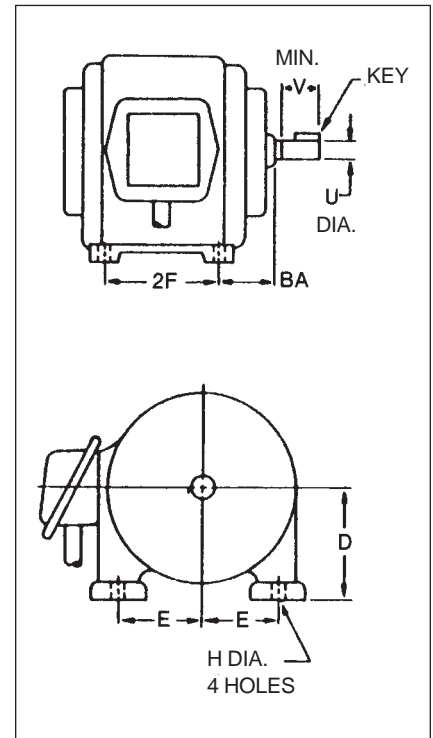
NEMA Frame Designation

Frame Assignments

HP	Motor Speed, RPM				HP	Motor Speed, RPM			
	3600	1800	1200	900		3600	1800	1200	900
1/8-1/4	—	48	—	—	15	215T, 256U	254T, 284U	284T, 324U	286T, 326U
1/4-1/2	48	—	56	—	20	254T, 284U	256T, 286U	286T, 326U	324T, 364U
1/2	—	—	48	—	25	256T, 286U	284T, 324U	324T, 364U	326T, 366U
3/4-1	—	56	—	—	30	284TS, 324S	286T, 326U	326T, 366U	364T, 404U
1-1 1/2	56	—	—	—	40	286TS, 326S	324T, 364U	364T, 404U	365T, 405U
1/2	—	—	—	143T	50	324TS, 364US	326T, 365U, 365US	365T, 405U	404T, 444U
3/4	—	—	143T	145T	60	326TS, 365US	364TS▲, 404U, 404US	404T, 444U	405T, 445U
1	—	143T	145T	182T	75	364TS, 404US	365TS▲, 405U, 405US	405T, 445U	444T
1 1/2	143T	145T	182T	184T	100	365TS, 405US	404TS▲, 444US	444T	445T
2	145T	145T	184T	213T	125	404TS, 444US	405TS▲, 445US	445T	—
3	145T	182T	213T	215T, 254U	150	405TS, 445US	444TS▲	—	—
5	182T	184T	215T, 254U	254T, 256U	200	—	445TS▲	—	—
7 1/2	184T	213T, 254U	254T, 256U	256T, 284U	250	—	—	—	—
10	213T, 254U	215T, 256U	256T, 284U	284T, 286U	—	—	—	—	—

Motor Frame Dimensions

Frame Size	D	E	2F	H Dia. (4 Holes)	U Dia.	BA	V Min.	Key
48	3	2 1/2	2 1/4	1 1/32	1/2	2 1/2	...	3/8 FLAT
56	3 1/2	2 1/16	3	1 1/32	5/8	2 1/4	...	3/16x3/16x1 1/8
143T	3 1/2	2 3/4	4	1 1/32	7/8	2 1/4	2	3/16x3/16x1 1/8
145T	3 1/2	2 3/4	5	1 1/32	7/8	2 1/4	2	3/16x3/16x1 1/8
182T	4 1/2	3 3/4	4 1/2	1 3/32	1 1/8	2 1/4	2 1/2	1/4x1/4x1 1/4
184T	4 1/2	3 3/4	5 1/2	1 3/32	1 1/8	2 1/4	2 1/2	1/4x1/4x1 1/4
213T	5 1/4	4 1/4	5 1/2	1 3/32	1 1/8	3 1/2	3 1/4	5/16x5/16x2 1/2
215T	5 1/4	4 1/4	7	1 3/32	1 1/8	3 1/2	3 1/4	5/16x5/16x2 1/2
254U	6 1/4	5	8 1/4	1 7/32	1 1/8	4 1/4	3 1/2	5/16x5/16x2 1/2
254T	6 1/4	5	8 1/4	1 7/32	1 1/8	4 1/4	3 1/4	5/16x5/16x2 1/2
256U	6 1/4	5	10	1 7/32	1 1/8	4 1/4	3 1/2	5/16x5/16x2 1/2
256T	6 1/4	5	10	1 7/32	1 1/8	4 1/4	3 1/4	5/16x5/16x2 1/2
284U	7	5 1/2	9 1/2	1 7/32	1 1/8	4 3/4	4 1/4	3/8x3/8x3 1/4
284T	7	5 1/2	9 1/2	1 7/32	1 1/8	4 3/4	4 1/4	1/2x1/2x3 1/4
284TS	7	5 1/2	9 1/2	1 7/32	1 1/8	4 3/4	3	3/8x3/8x1 1/2
286U	7	5 1/2	11	1 7/32	1 1/8	4 3/4	4 1/4	3/8x3/8x3 1/4
286T	7	5 1/2	11	1 7/32	1 1/8	4 3/4	4 1/4	1/2x1/2x3 1/4
286TS	7	5 1/2	11	1 7/32	1 1/8	4 3/4	3	3/8x3/8x1 1/2
324U	8	6 1/4	10 1/2	2 1/32	1 1/8	5 1/4	5 1/2	1/2x1/2x4 1/4
324T	8	6 1/4	10 1/2	2 1/32	2 1/8	5 1/4	5	1/2x1/2x3 1/4
324TS	8	6 1/4	10 1/2	2 1/32	1 1/8	5 1/4	3 1/2	1/2x1/2x2
326U	8	6 1/4	12	2 1/32	1 1/8	5 1/4	5 1/2	1/2x1/2x4 1/4
326T	8	6 1/4	12	2 1/32	2 1/8	5 1/4	5	1/2x1/2x3 1/4
326TS	8	6 1/4	12	2 1/32	1 1/8	5 1/4	3 1/2	1/2x1/2x2
364U	9	7	11 1/4	2 1/32	2 1/8	5 1/2	6 1/2	1/2x1/2x5
364US	9	7	11 1/4	2 1/32	1 1/8	5 1/2	3 1/2	1/2x1/2x2
364T	9	7	11 1/4	2 1/32	2 1/8	5 1/2	5 1/2	3/8x3/8x4 1/4
364TS	9	7	11 1/4	2 1/32	1 1/8	5 1/2	3 1/2	1/2x1/2x2
365U	9	7	12 1/4	2 1/32	2 1/8	5 1/2	6 1/2	1/2x1/2x5
365US	9	7	12 1/4	2 1/32	1 1/8	5 1/2	3 1/2	1/2x1/2x2
365T	9	7	12 1/4	2 1/32	2 1/8	5 1/2	5 1/2	3/8x3/8x4 1/4
365TS	9	7	12 1/4	2 1/32	1 1/8	5 1/2	3 1/2	1/2x1/2x2
404U	10	8	12 1/4	3 1/16	2 1/8	6 1/2	6 1/2	3/8x3/8x5 1/2
404US	10	8	12 1/4	3 1/16	1 1/8	6 1/2	4	1/2x1/2x2 1/2
404T	10	8	12 1/4	3 1/16	2 1/8	6 1/2	7	3/8x3/8x5 1/2
404TS	10	8	12 1/4	3 1/16	2 1/8	6 1/2	4	1/2x1/2x2 1/2
405U	10	8	13 3/4	3 1/16	2 1/8	6 1/2	6 1/2	3/8x3/8x5 1/2
405US	10	8	13 3/4	3 1/16	1 1/8	6 1/2	4	1/2x1/2x2 1/2
405T	10	8	13 3/4	3 1/16	2 1/8	6 1/2	7	3/8x3/8x5 1/2
405TS	10	8	13 3/4	3 1/16	2 1/8	6 1/2	4	1/2x1/2x2 1/2
444U	11	9	14 1/2	3 1/16	2 1/8	7 1/2	8 1/2	3/8x3/8x7
444US	11	9	14 1/2	3 1/16	1 1/8	7 1/2	4	1/2x1/2x2 1/2
444T	11	9	14 1/2	3 1/16	3 1/8	7 1/2	8 1/4	1/2x1/2x6 1/2
444TS	11	9	14 1/2	3 1/16	2 1/8	7 1/2	4 1/2	3/8x3/8x3
445U	11	9	16 1/2	3 1/16	2 1/8	7 1/2	8 1/2	3/8x3/8x7
445US	11	9	16 1/2	3 1/16	1 1/8	7 1/2	4	1/2x1/2x2 1/2
445T	11	9	16 1/2	3 1/16	3 1/8	7 1/2	8 1/4	1/2x1/2x6 1/2
445TS	11	9	16 1/2	3 1/16	2 1/8	7 1/2	4 1/2	3/8x3/8x3



Shaded area indicates typical single phase standard squirrel-cage, open type, a-c motors. Balance of table same except three phase, design A and B.

▲ When these motors are used with V-belt or chain drives, the correct frame size is the one with the suffix "S" omitted — consult manufacturer.